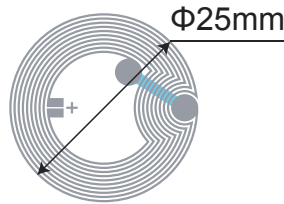


## IC Specifications

- IC Protocol:ISO/IEC 14443A
- ISO Typical Operating Frequency:13.56MHz
- Chip:NTAG 213
- User Memory:144 bytes
- Operating Temperature:-25°C/+70°C
- Storage Temperature:-55°C/+125°C

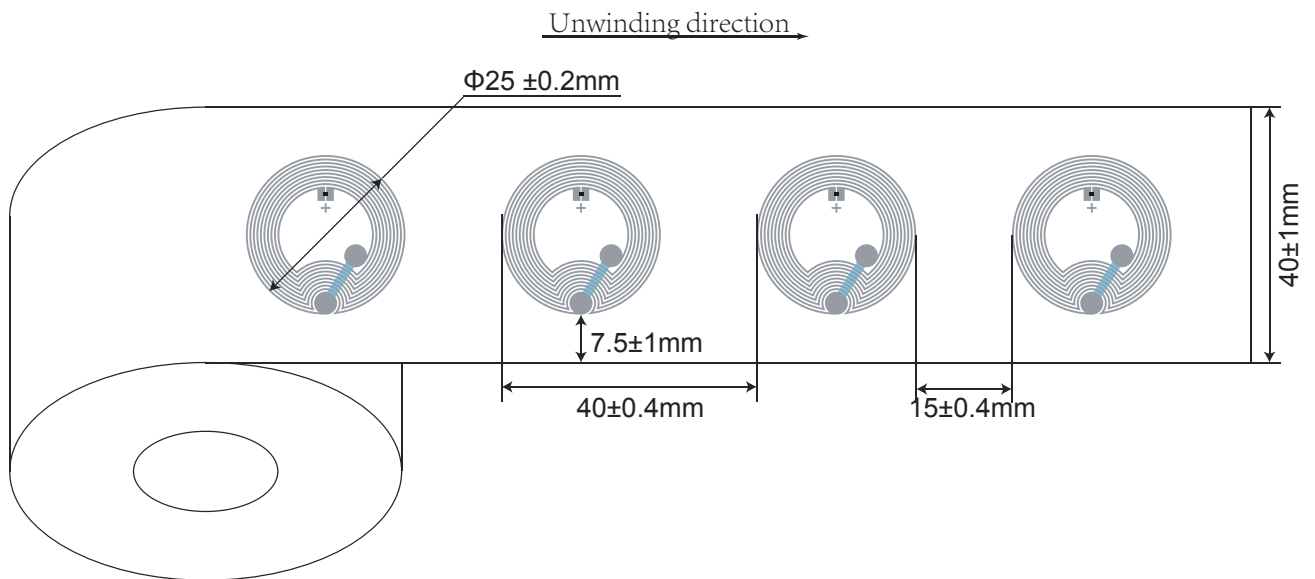
## Antenna Design

- Aluminum Etching/30  $\mu$ m
- Substrate: PET/38  $\mu$ m
- Aluminum Etching/10  $\mu$ m

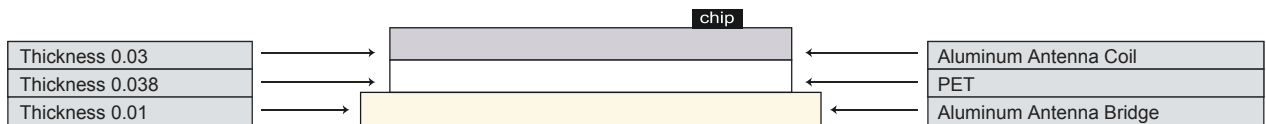


1020312

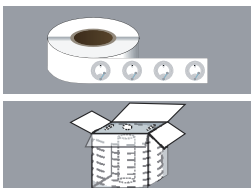
## Dry Inlay Layout and Dimensions



## Dry Inlay Composition



## Packaging



12,000 pcs(total inlay)/roll with 3"core

6 rolls/inner case 365\*365\*355mm