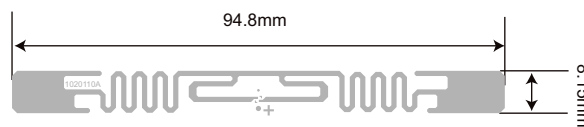


IC Specifications

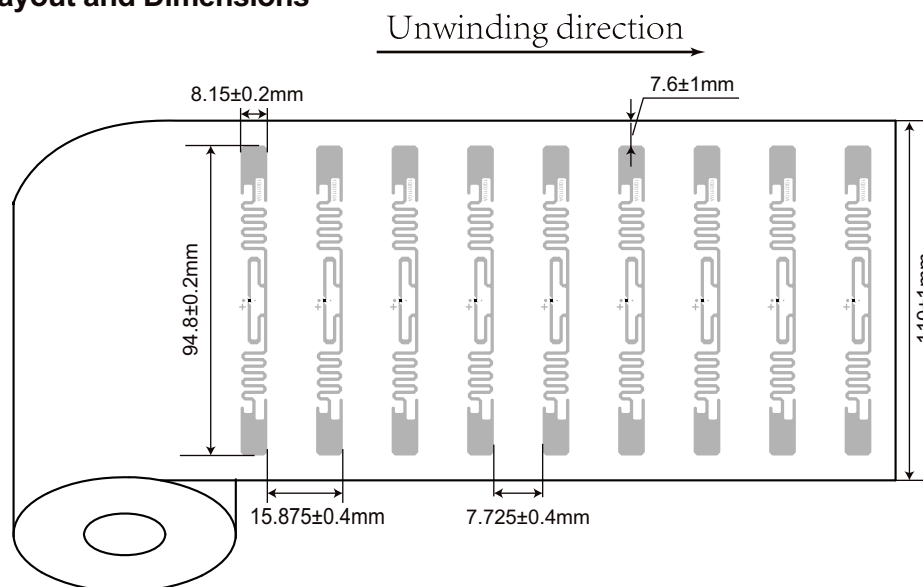
- IC Protocol:ISO/IEC 18000-6C
- ISO Typical Operating Frequency:860~960MHz
- Chip:HIGGS 4
- User Memory:128 bits
- Operating Temperature:-50°C/+85°C
- Storage Temperature: /

Antenna Design

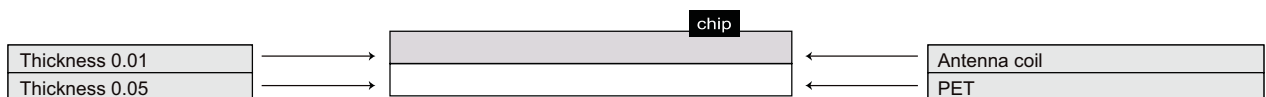
- Aluminum Etching/10 μm
- Substrate: PET/50 μm



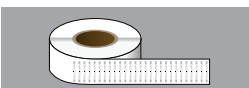
Dry Inlay Layout and Dimensions



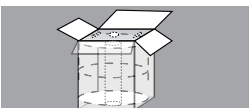
Dry Inlay Composition



Packaging



20,000 pcs(total)/roll with 3" core



2 rolls/master ctn 210*210*300mm(TBD)

1.Dry inlay Roll

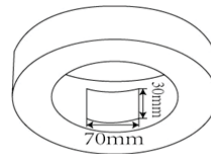
Parameter	Characteristics
Dry inlay roll	Core inside diameter: 76±1 mm
	Core wall thickness: 5±1mm
	Roll outside diameter:205mm max
Web width	110mm±1mm
Quantity per roll	20,000 pcs total
Yield of raw roll	99% (minimum)
Bad dry inlay marked	The bad inlays will be ink marked in the middle, size is Diam.6±1mm
Tail	1 meter leading antenna at the beginning and ending of roll
Continue bad dry inlay	≤3pcs, Continuous 20pcs good products don't have two tape Splicing
Joints	≤10pcs/roll (except leading tape) , red tape,the width is 35mm
Winding direction	chip outside

2.Roll label

-size:70*30mm

Batch No.:	Reel No.:
Antenna No.:	
Good QTY:	PCS
Bad QTY:	PCS

- Packing



3.Master Carton Label

-size:100*80mm

Carton NO.:			
Customer PO:			
Antenna NO.:			
Chip:			
Batch No.	Good QTY	Bad QTY	Roll NO.
			1

- Packing

