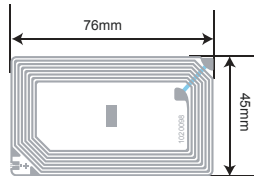


IC Specifications

- IC Protocol:ISO/IEC 14443A
- ISO Typical Operating Frequency:13.56MHz
- Chip:F08
- Operating Temperature:/
- Storage Temperature:+18°C/+24°C

Antenna Design

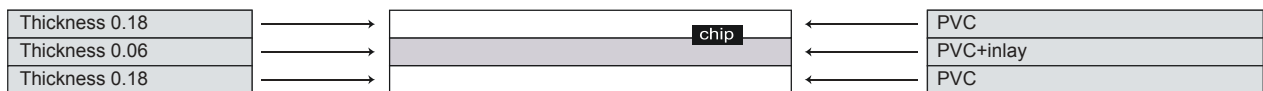
- Aluminum Etching/30 μm
- Substrate: PET/38 μm
- Aluminum Etching/10 μm



Sheet Inlay Layout and Dimensions



Sheet Inlay Composition



Packaging

	50 sheets / package 510*305*25mm
	5 packages/master carton 525*315*135mm