

IC Specifications

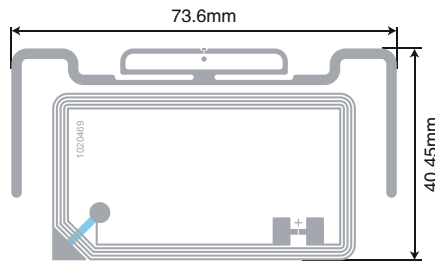
- IC Protocol: ISO/IEC 14443A
- ISO Typical Operating Frequency:13.56MHz
- Chip:UL-C 50pf
- User Memory:1184 bits
- Operating Temperature:-25°C/+70°C
- Storage Temperature:-55°C/+125°C

IC Specifications

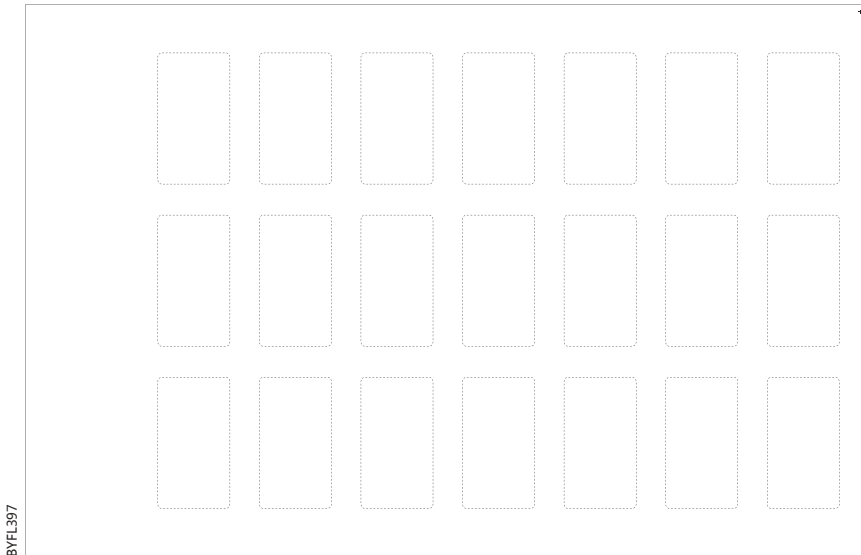
- IC Protocol: ISO/IEC 18000-6C
- ISO Typical Operating Frequency:860-960MHz
- Chip:U CODE 7
- Operating Temperature:-40°C/+85°C
- Storage Temperature: -55 C/+125 C

Antenna Design

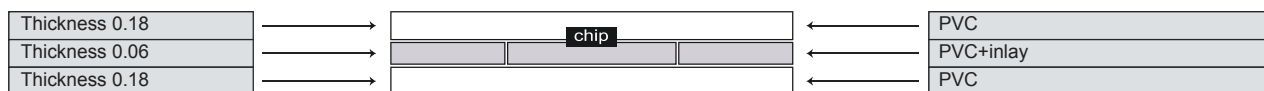
- Aluminum Etching/30 μm
- Substrate: PET/38 μm
- Aluminum Etching/10 μm



Sheet Inlay Layout and Dimensions



Sheet Inlay Composition



Packaging

	50 sheets / package 484*320*26mm(TBD)
	5 packages/master carton 510*345*160mm(TBD)