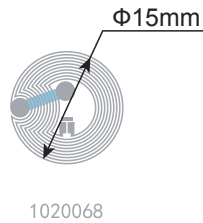


IC Specifications

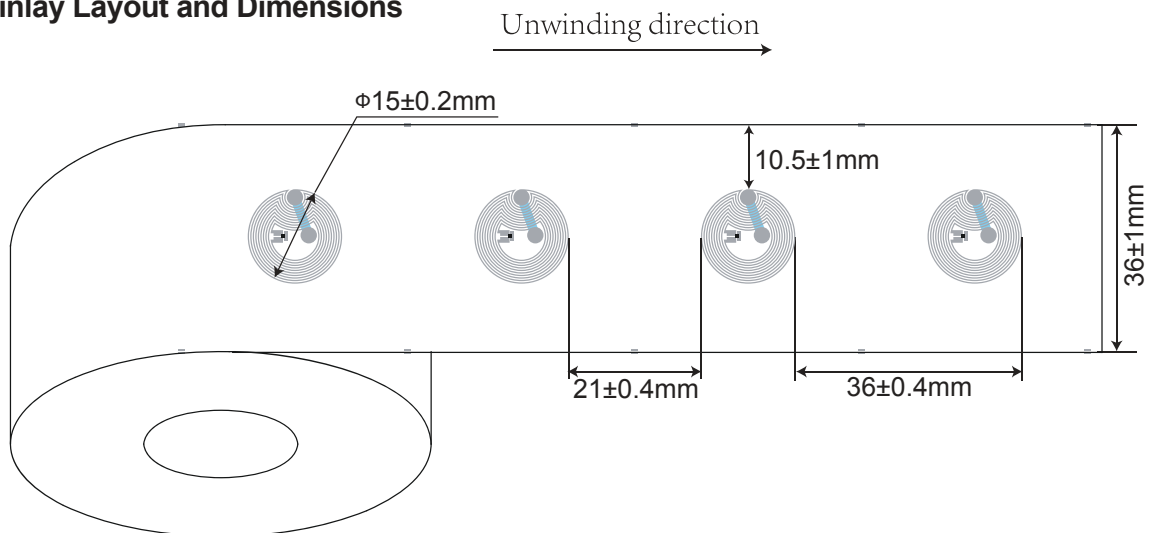
- IC Protocol:ISO/IEC 15693
- ISO Typical Operating Frequency:13.56MHz
- Chip:EM4233(97PF)
- User Memory:1664 bits
- Operating Temperature:-40°C/+85°C
- Storage Temperature:-55°C/+125°C

Antenna Design

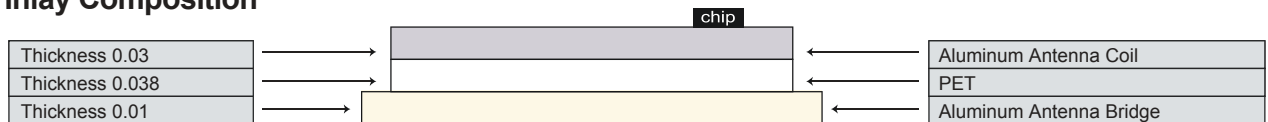
- Aluminum Etching/30 μm
- Substrate: PET/38 μm
- Aluminum Etching/10 μm



Dry Inlay Layout and Dimensions



Dry Inlay Composition



Packaging

	12,000 pcs(total)/roll with 3"core
	6 rolls/master ctn 365*365*355mm