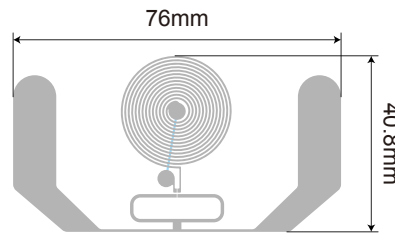


IC Specifications

- IC Protocol:ISO/IEC 14443A-3/18000-63
- ISO Typical Operating Frequency:13.56MHz
- Chip:EM4423 50pf
- User Memory:1920 bits/160 bits
- Operating Temperature:-40°C/+85°C
- Storage Temperature: /

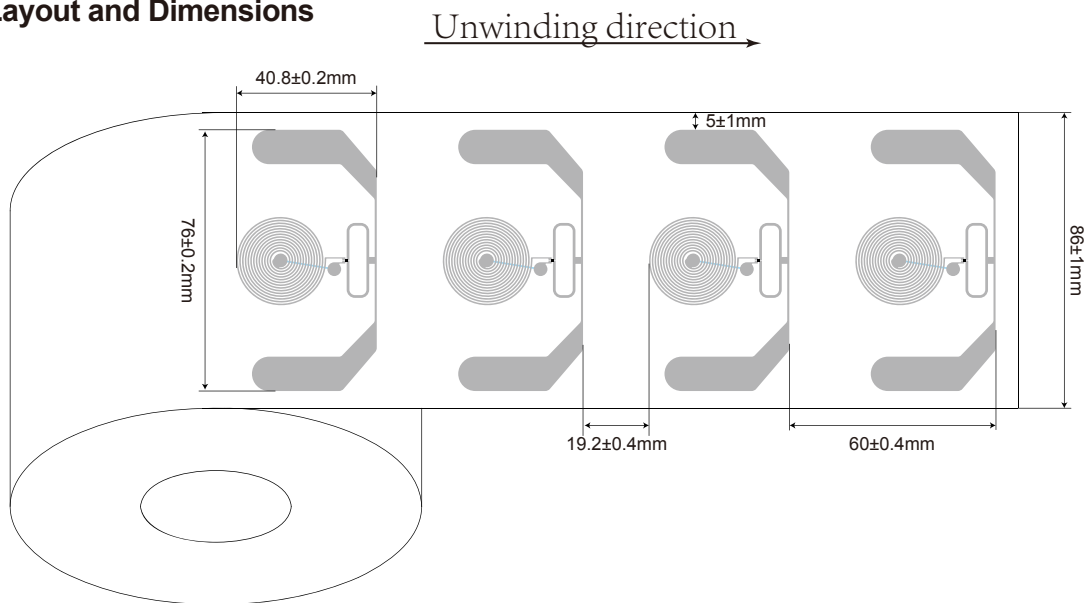
Antenna Design

- Aluminum Etching/30 μm
- Substrate: PET/38 μm
- Aluminum Etching/10 μm

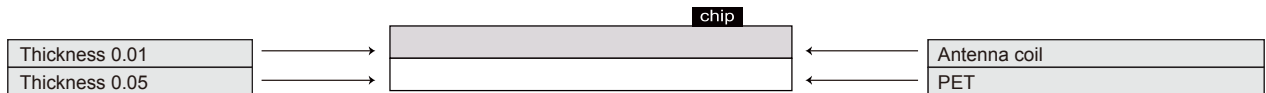


2016699

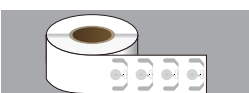
Dry Inlay Layout and Dimensions



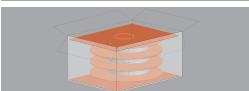
Dry Inlay Composition



Packaging



8,000 pcs(total inlay) with 3"core



3 inner cases/master ctn 365*365*355mm