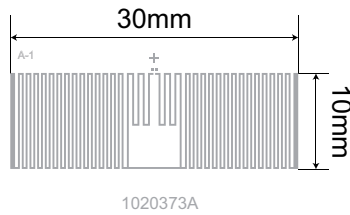


IC Specifications

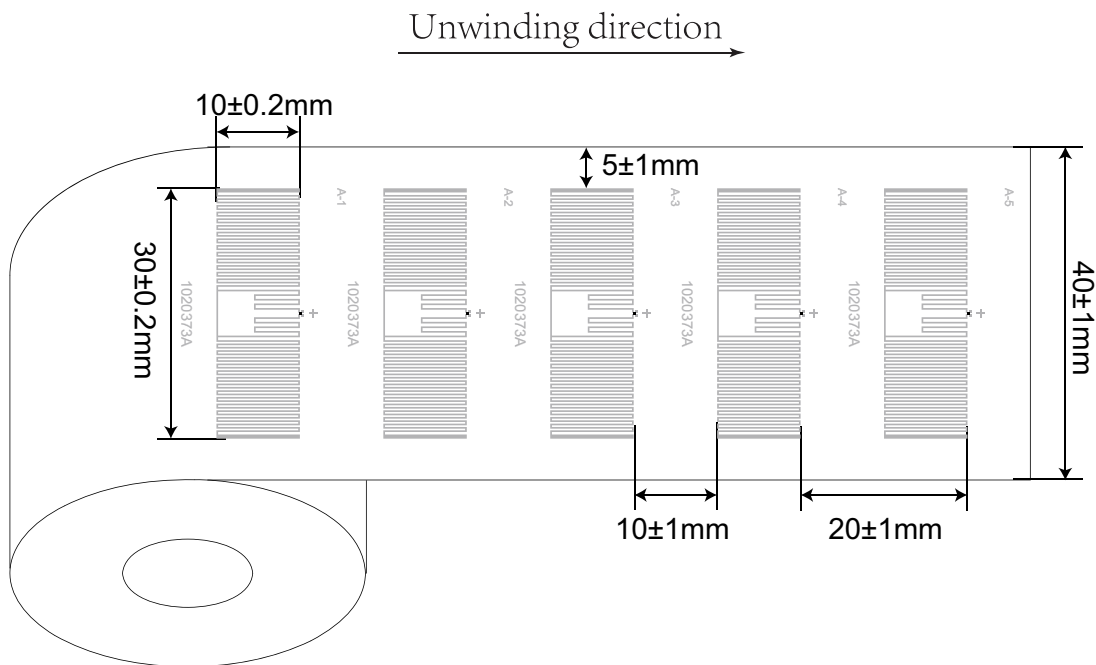
- IC Protocol:ISO/IEC 18000-6C
- ISO Typical Operating Frequency:860~960MHz
- Chip:EM4124
- Operating Temperature:-40°C/+85°C
- Storage Temperature:-50°C/+125°C

Antenna Design

- Aluminum Etching/10 μm
- Substrate: PET/50 μm



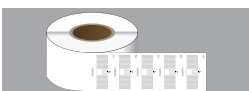
Dry Inlay Layout and Dimensions



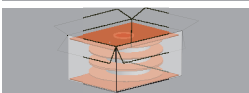
Dry Inlay Composition



Packaging



8,000 pcs(total inlay) with 3" core



6 inner cases/master ctn 365*365*355mm