



D LRI 2K 0014A 36-20.5 48 H 005-12K-60K

IC Specifications

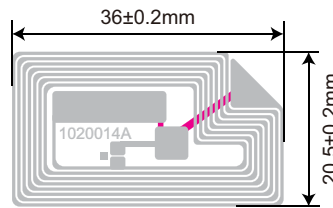
- IC Protocol:ISO/IEC 15693
- ISO Typical Operating Frequency:13.56MHz
- Chip:ST LRI 2K
- User Memory:2048 bits

Environmental Suggestion

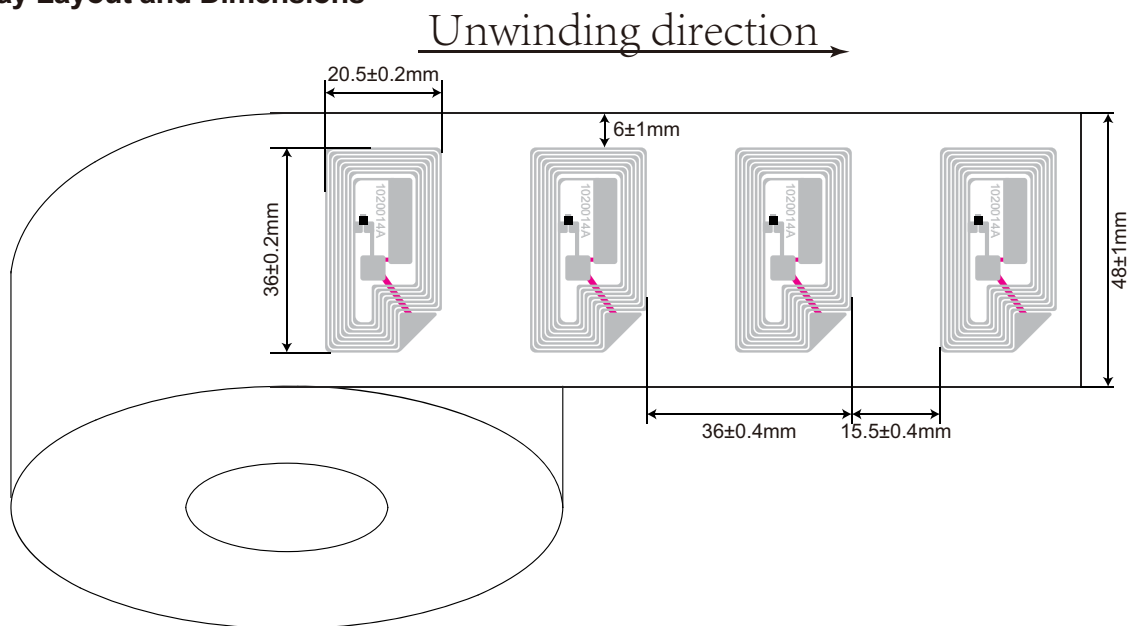
- Operating Temperature:-20°C/+85°C
- Storage Temperature:-65°C/+150°C

Antenna Design

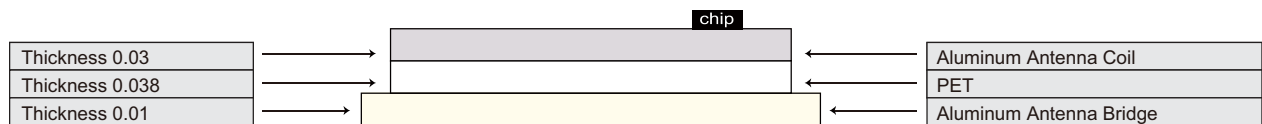
- Aluminum Etching/30 μm
- Substrate: PET/38 μm
- Aluminum Etching/10 μm



Dry Inlay Layout and Dimensions



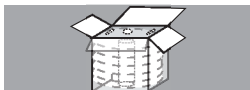
Dry Inlay Composition



Packaging



12,000 pcs/roll(total inlay) with 3" core



5 roll/inner case 395*395*330mm