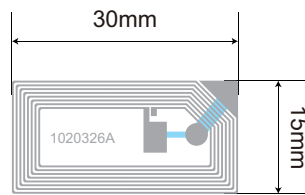


IC Specifications

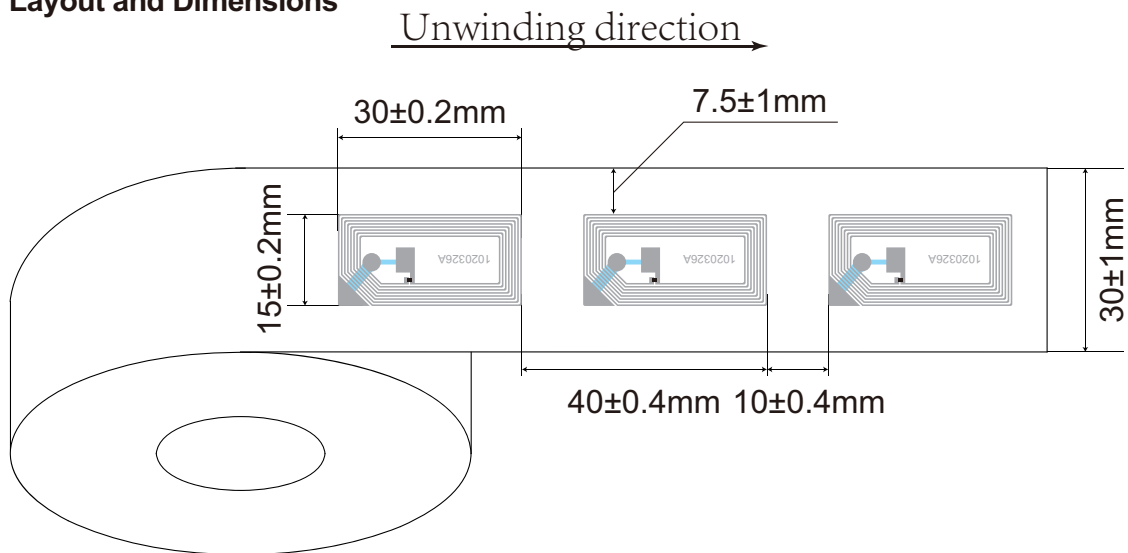
- IC Protocol:ISO/IEC14443
- ISO Typical Operating Frequency:13.56MHz
- Chip:Ntag 213
- User Memory:144 bits
- Operating Temperature:-25°C/+70°C
- Storage Temperature:-55°C/+125°C

Antenna Design

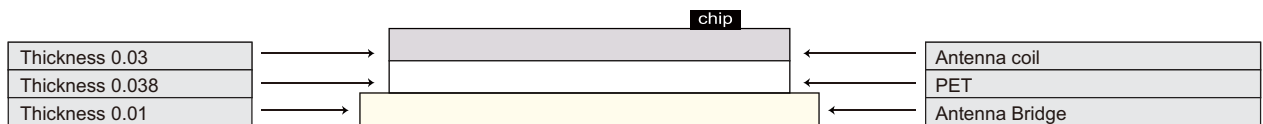
- Aluminum Etching/30 μm
- Substrate: PET/38 μm
- Aluminum Etching/10 μm



Dry Inlay Layout and Dimensions



Dry Inlay Composition



Packaging

	12,000 pcs(good inlay)/roll with 3" core
	7 inner cases/master ctn 395*395*330mm